

PERSONALITY PROFILES

Dr. Subrata K. Banerjea, GOLD MEDALIST

B.H.M.S. (HONOURS IN NINE SUBJECTS OF CALCUTTA UNIVERSITY)

FELLOW : AKADEMIE HOMOOPATHISCHER DEUTSCHER ZENTRALVEREIN (GERMANY)

HOMOEOPATHIC MEDICAL ASSOCIATION OF THE UNITED KINGDOM (U.K.)

DIRECTOR : BENGAL ALLEN MEDICAL INSTITUTE

PRINCIPAL : ALLEN COLLEGE OF HOMOEOPATHY, ESSEX, ENGLAND

“SAPIENS”, 382, BADDOW ROAD, GREAT BADDOW,

CHELMSFORD, ESSEX CM2 9RA, ENGLAND

Tel & Fax No. 44 (0) 1245 505859

**DUTIFUL
&
FAMILY ORIENTED**

CALCAREA CARB

Desire for company

Agg. alone

Safety & security in family

Fear

Insecurity

Anxiety → Cautious

Dread of being alone

Need for protection

Security

Stability

Homely

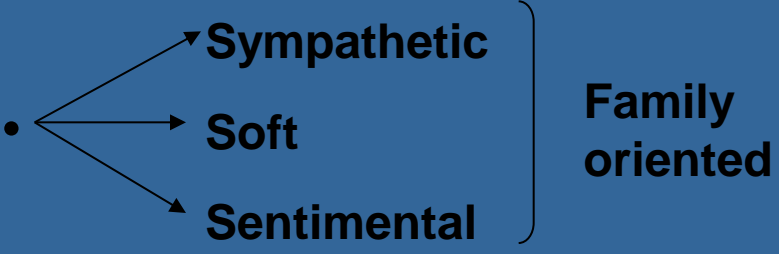


CALC. CARB INSECURED BABY

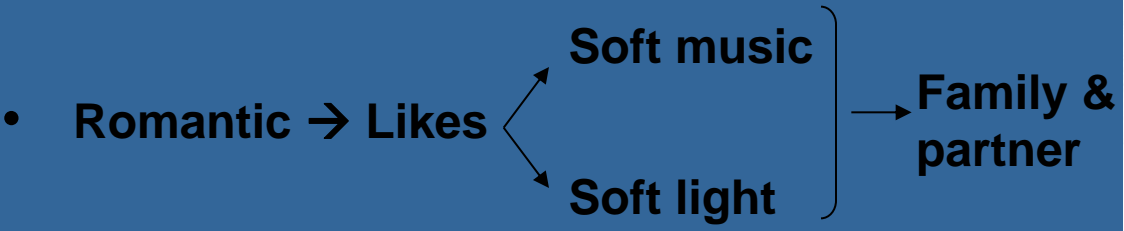


CALC. CARB
SERIOUS SINCERE BOY

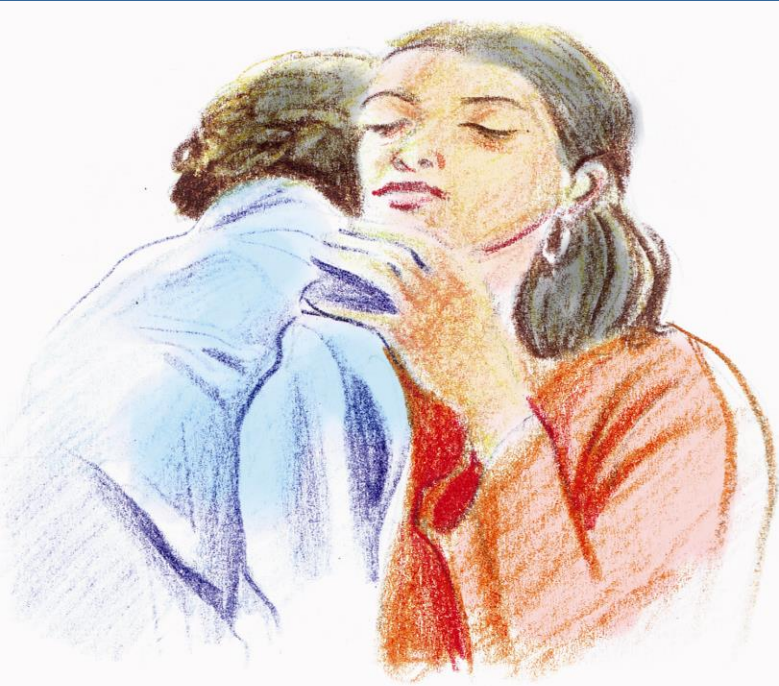
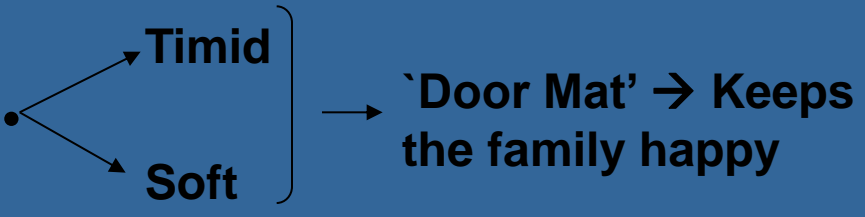
CARCINOSIN



- Suffers in silence → to keep the family happy.



- Dreads busy streets → Homely.



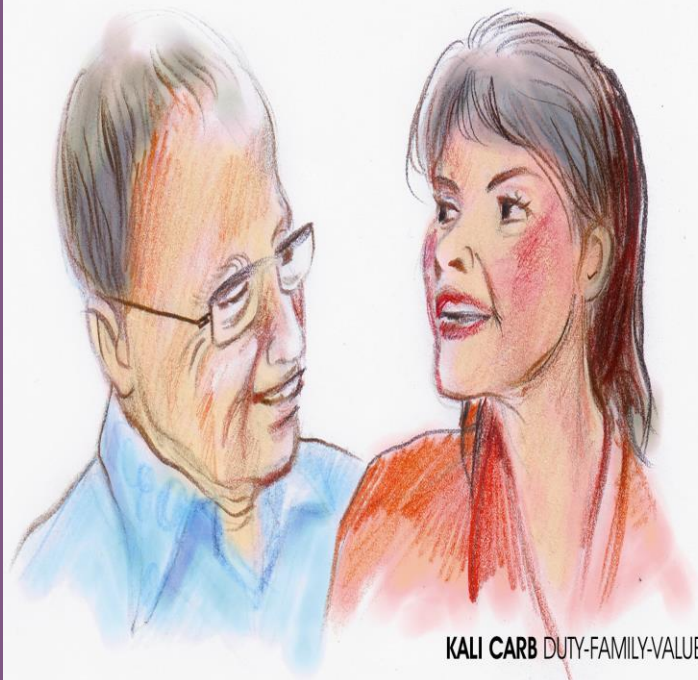
CARCINOSIN ROMANTIC DUTIFU



COURTEOUS & FASTIDIOUS

KALI CARB

- Insecurity → Needs
 - Family
 - Support
 - Group
- Anxious when alone → Fear of being alone
 - Desire to company
 - Aversion to solitude
- Conservative }
Conventional } Strong sense of duty
- Serious }
Sincere } Bond with family members
- Fear of
 - Disease & death
 - Of being left alone
 - Incurable disease better in company
- Strong principled → Regards Old Values] Family is very important.



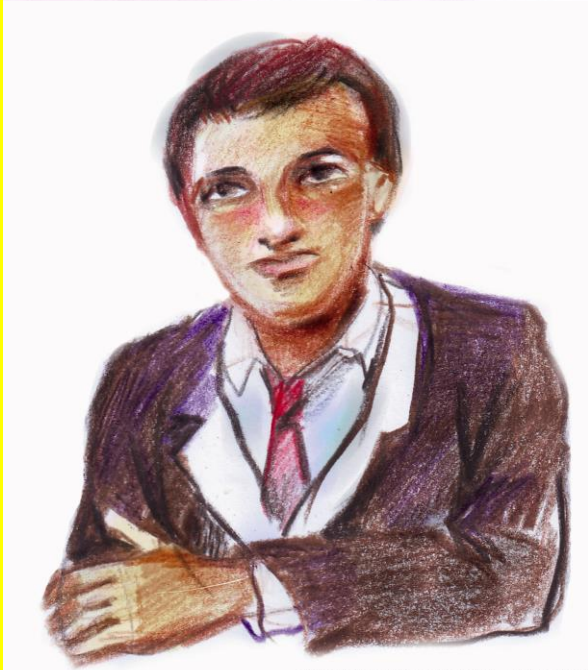
KALI CARB DUTY-FAMILY-VALUE



VALUE - BOND - SUPPORT - CONVENTIONAL

NATRUM MUR

- **Introvert**
• **Closed** } **Feels comfortable with family members**
- **Believes in close / 1 – 1 relationship.**
- **Loyal**
• **Dedicated** } **Too close in 1 – 1 relationship**
- **Fears**
 - **Rejection**
 - **Disappointment**
} **On the guard → Sticks to very close family**
- **Deception → Difficult to overcome → Feels supported by close family.**
- **Sensitive**
 - **Physical**
 - **Mental**
} **Support** } **Family**
} **Shelter** } **Home**
- **Mental modalities**
 - **Aggravation: from sunrise to sunset, from consolation, during full-moon, from mental exertion (Lippe), from Noise, - noise of bell or firing of pistol (Kent) from music. Consolation, mental exertion, talking, reading, anger, grief, vexation.**
 - **Amelioration: in open air, cold bathing.**



NATRUM MUR CLOSED--RESENTFUL

PULSATILLA

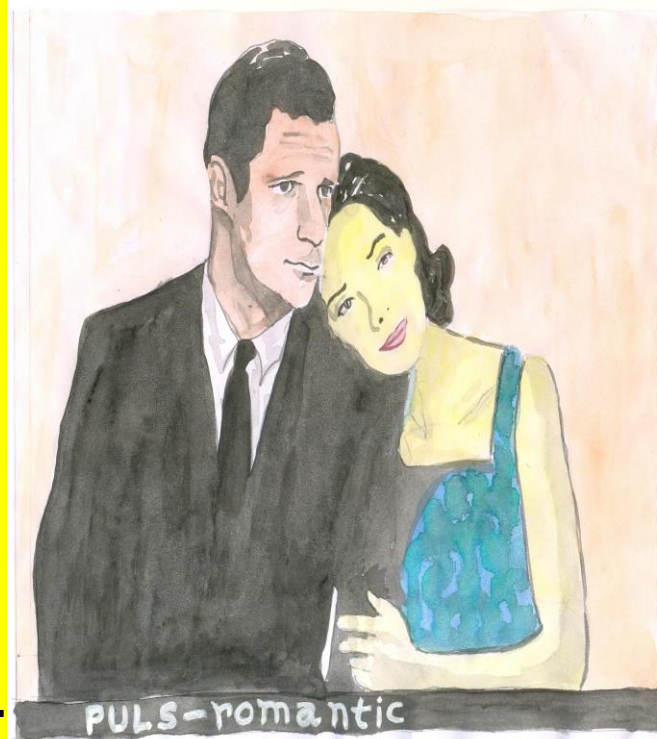
- Company: Desires.



- Mental modalities: Aggravation: (i) Evening and night; (ii) Twilight; (iii) Alternate evenings; (iv) Change of weather; (iv) Detailing the symptom.



PLEASING TO SEE



PULS-romantic

6 HYPER-ACTIVE RESTLESS CHILDREN

BARYTA CARB

- Weak concentration.
- Anything outside of routine is viewed as a threat.
- Withdrawal into himself.
- Own approach to the world, his own mode of behaviour.
- Fear of ridicule.
- Hides behind sofa when visitors arrive.
- Mental Modalities:
Aggravation: When thinks of disease.



BARYTA CARB - DULLNESS - IDIOCY

KALI BROMATUM

Conservative Conflictive Constant Motion

- Romantic → Likes
 - Mental
 - Physical
- Night terrors.
- Illusions.
- Delusions of conspiracy.
- Insecurity (helplessness).
- Nervous.



KALI BROM - FIDGETY FINGERS

MEDORRHINUM

→ Rushed speech.

→ Repeats himself or leaves sentences unfinished.

→ Aggressive behaviour.

→ He acts rashly, reacts immoderately, speaks up boldly, or pushes events and situations to the breaking point to learn what he can or cannot do.

→ Being told that the stove is hot, but must burn himself (more than once).

→ Always busy, hard to relax.

• As if the circuits of the brain are not connected correctly, unable to pick up small objects or colour in pictures.
• Sexual acting out at an early age. Early experimentation of recreational drugs, watches violent movies with lots of blood, guts and gore.

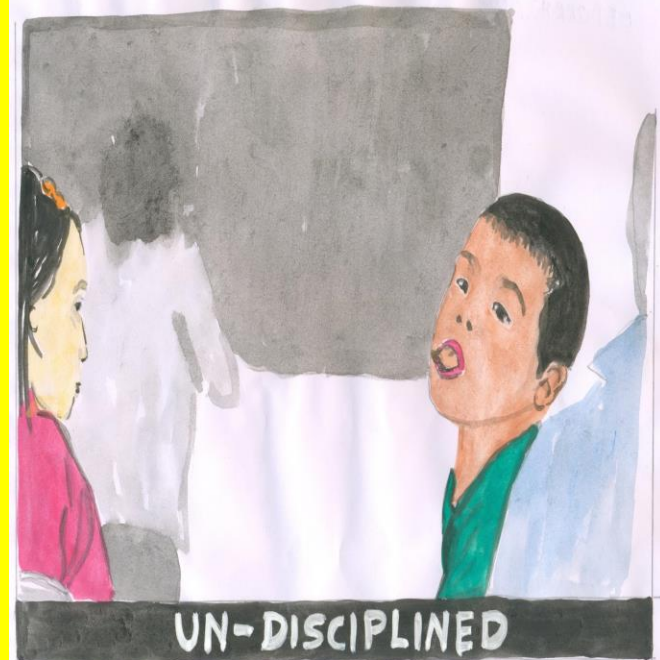
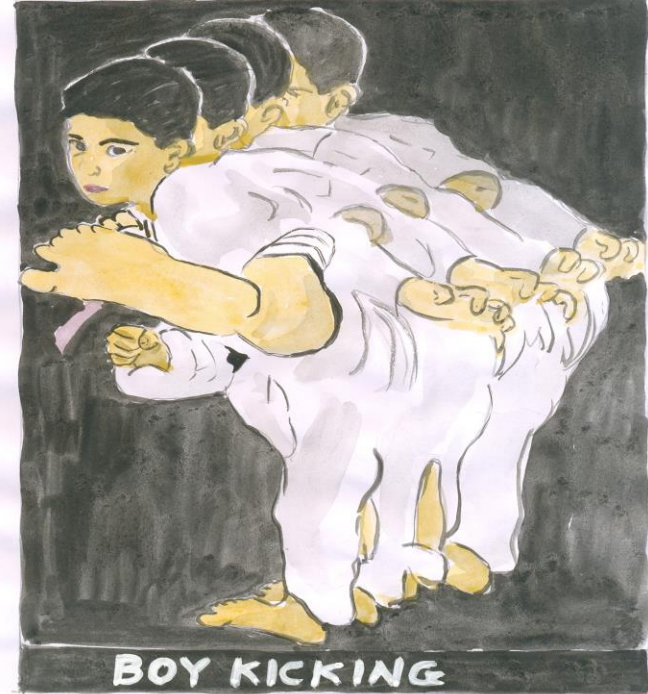
→ Cruelty of animals.

→ Messy by nature.

→ Fighting with parents and violent anger (Tuberculinum)

→ Utter disregard for safety.

→ **Extremes.**

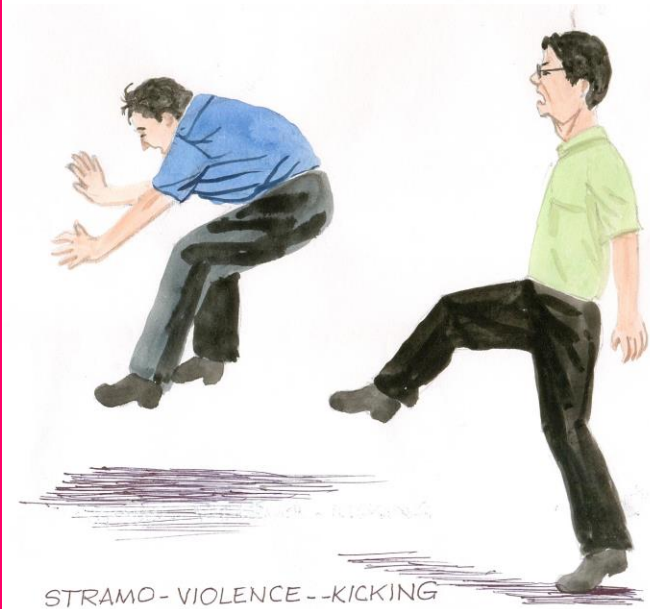


STRAMONIUM

- **Stramonium child who bites or kicks in anger, or screams as if beside himself and strikes out at others, is striking out at an intolerable world because his whole nervous system is off kilter.**
 - **Dreads the dark.**
 - **Yet on the other hand, he is afraid of silence and solitude.**
 - **Erratic changes of mood and behaviour.**
 - **“Go away! Leave me alone” he snarls in a burst of irritability.**
 - **He too easily “loses it” and is unable to control himself.**
 - **Lack of responsiveness. The child is told to get dressed for school and half an hour later he is still wandering around in his pyjamas.**
 - **Behaves rudely or in some socially unacceptable manner, and their may even be violence in his behaviour as he attempts to make others and the world dance to his tune.**
 - **Inability to concentrate or focus on school work.**
 - **Burst into sobs when contradicted or reprimanded.**
 - **All this brings on more guilt and anxiety → vicious circle.**



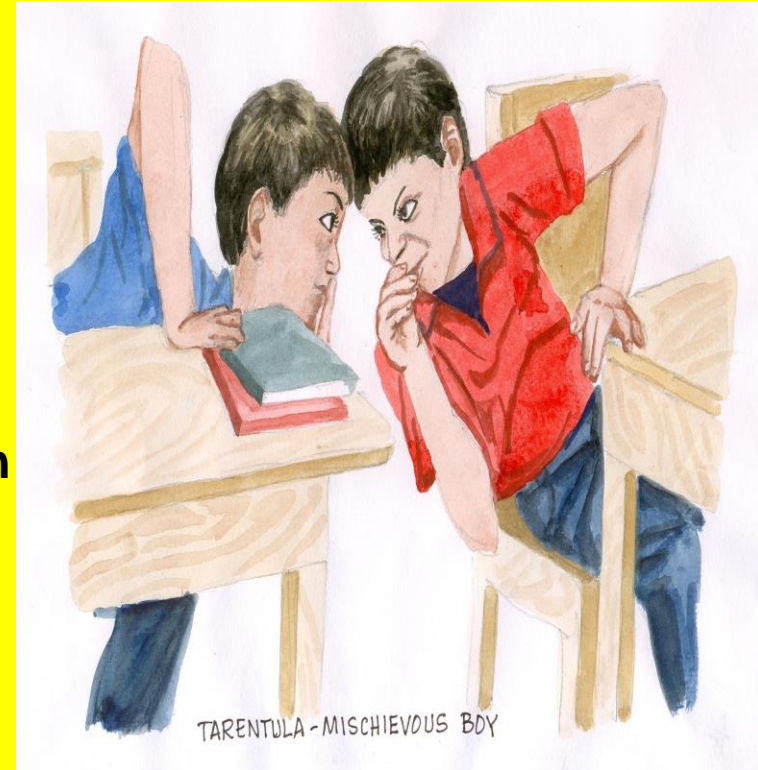
STRAMONIUM - VIOLENCE - HITTING



STRAMO - VIOLENCE - KICKING

TARANTULA HISPANIA

- Extreme restlessness excited by music, rhythm and striking colours.
- Sudden alteration of mood: violent attacks or lies down in dark and will not talk.
- Pulls his own hair, presses hands upon head. Strikes and tears things.
- Extreme restlessness.
- Must keep in constant motion, though walking aggravates.
- Runs about, jumps up and down. Becomes violently excited by music. Constant motion of arms, legs, trunk and head.
- Aversion to company, but wants someone present.
- Impaired memory.
- Lies down in dark and does not want to talk.
- > open air, music.



TUBERCULINUM

Restlessness. Hyperactivity.

Wants to do many things at one time in short period. Plays with many toys. Fidgety, taps feet while sitting.

A restless desire for change of occupation of environment, and being bored too easily with his surroundings.

Kick and break toys.

Crying and exhibiting behavioural disorders quite capable of disrupting the entire family dynamic.

< dairy foods (Sulphur and Lyc. < sugar) < fruit (Medorrhinum).

Fits of violent temper.

Head-thumping. Curse and swear.

Dissatisfaction, desire to move.

Cannot concentrate on one subject for long time.



TUBERCULINUM -- BOY DESTRUCTIVE



TUBERCULINUM - MALICIOUS

6 STUBBORN

ANTIMONIUM CRUDUM

- Intolerant of contradiction.
- Irritability
 - Crops
 - Fretful
 - Ill-humour
- Aversion being
 - Touched
 - Looked at
- - Sulky
 - Sentimental } Obsolete
- Sadness
 - Peevish
 - Sentimental } "Love-sick"
- - Cross
 - Contradictive
- Mental Modalities: Aggravation: (i) In open fire (Kent said, open fire is wholly against the Ant. Crud. Patient); (ii) In moon-light.



ANTIM CRUD - AVERSION TO BE LOOKED AT - TANTRUM



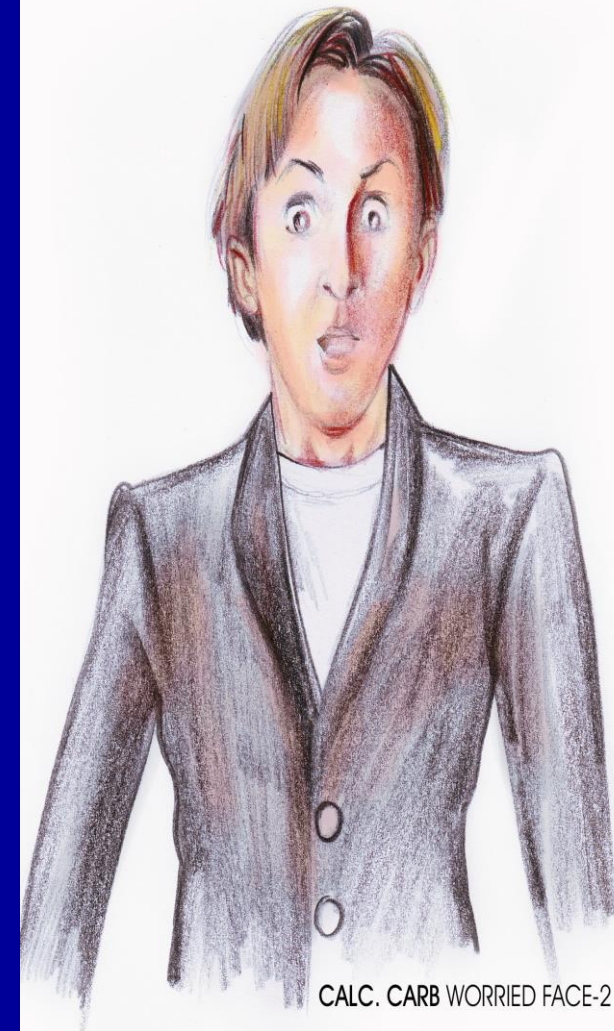
ANTIM CRUD - AVERSION - LOOKED AT



ANTIM CRUD - TANTRUM - FRETFUL

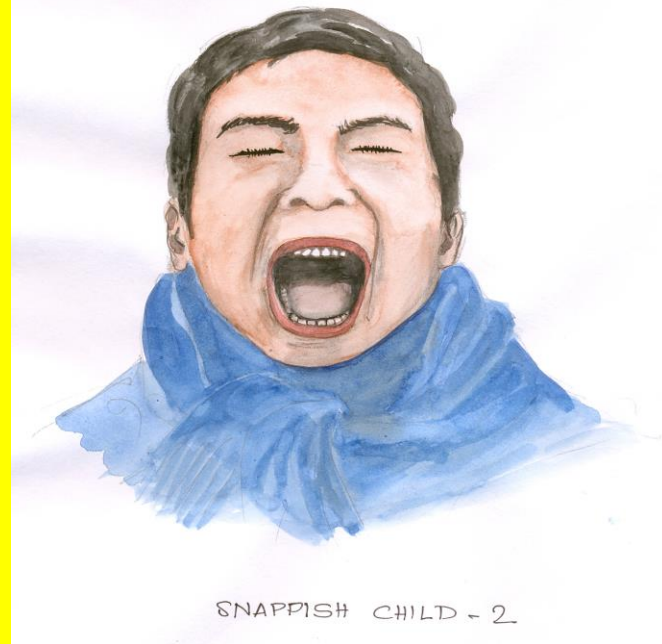
CALCAREA CARB

- Anxiety about future
 - ↳ Insecured
 - ↳ WorryAnger → stubborn
- Despair of recovery → Irritability.
- Fear of
 - ↳ Impending Cancer
 - ↳ Contagious disease
 - ↳ InsanityClosed → Stubborn
- Offended easily
 - ↳ Obstinate
 - ↳ Headstrong
- - ↳ Selfish
 - ↳ EgoismHeadstrong
 - ↳ Hurried
 - ↳ Destructive
- - ↳ Reliable & SimplesDuty-bound
 - ↳ Works hard
 - ↳ SincereOverwhelmed
Overburdened
Over responsible

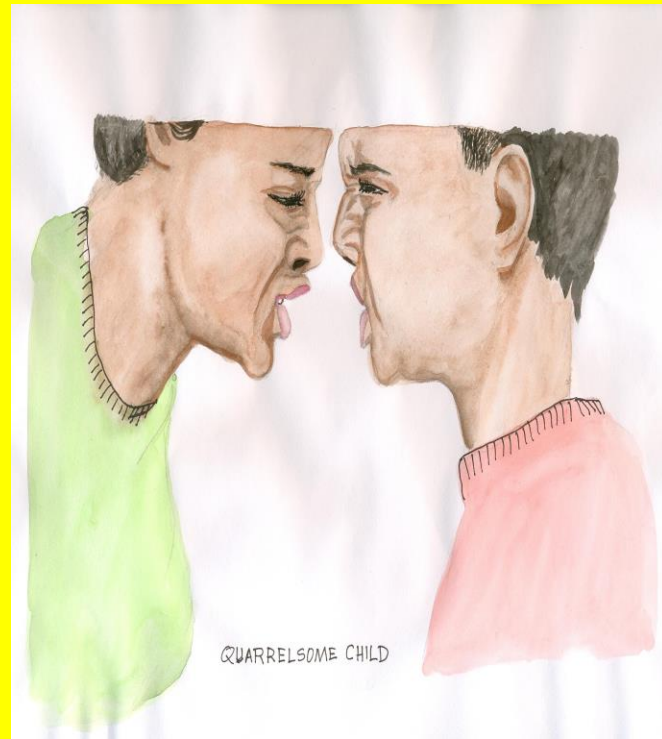


CHAMOMILLA

- Anger with
 - Rage
 - Violence
 - Heat } Stubborn
- Calmness contraindicates
 - Too ugly to lives
 - Spiteful } Headstrong
- Aversion of
 - Being touched
 - Being scorned
 - Being spoken to
 - Being interrupted
 - Being looked at } When not met
 - Spiteful
 - Stubborn
- Impatient → Headstrong.
- - Abusive
 - Striking }
 - Kicks
 - Screams
 - Temper tantrums
- Wants various things, when can not have
 - Whining
 - restlessness
 - Moaning, groaning } Stubborn
- Mental Modalities: Aggravation:
After a fit of anger of mother.



SNAPPISH CHILD - 2



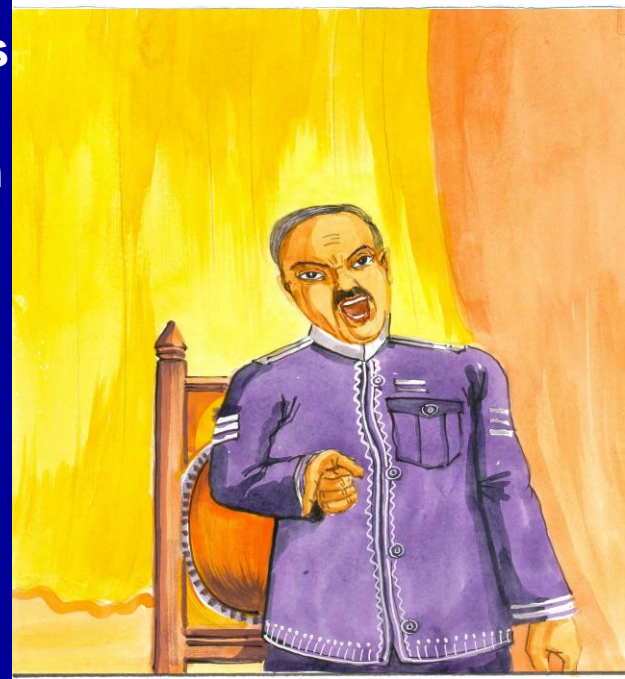
QUARRELSOME CHILD

NUX VOMICA

- Aggressive personality
 - Violent rage
 - Easily offended
- Unresolved anger
 - Complaining
 - Quarrelsome
- Over-rules
 - Boundaries
 - Restrictions
 When restricted → Head strong
- - Bossy, dictatorial
 - Confident, arrogant
 - Competitive, ambitious
 When objected → or contradicted
 - Malicious
 - Stubborn
- Offended easily
 - Anger
 - Stubborn
 → Revengeful
- Sensitive
 - Spiteful
 - Mischievous
 Rage → Violence → Head strong
- Mental Modalities: Aggravation: Mental exertion, anger, music emotion, anxiety, worry.



ARROGANT- CONFIDENT



SAMRT- BOSSY

TARENTULA HISPANIA

- Abusive
 - Impatient
 - Mischievous→ Better by rhythm e.g. music, dancing, jogging, etc. → When objected → Stubborn

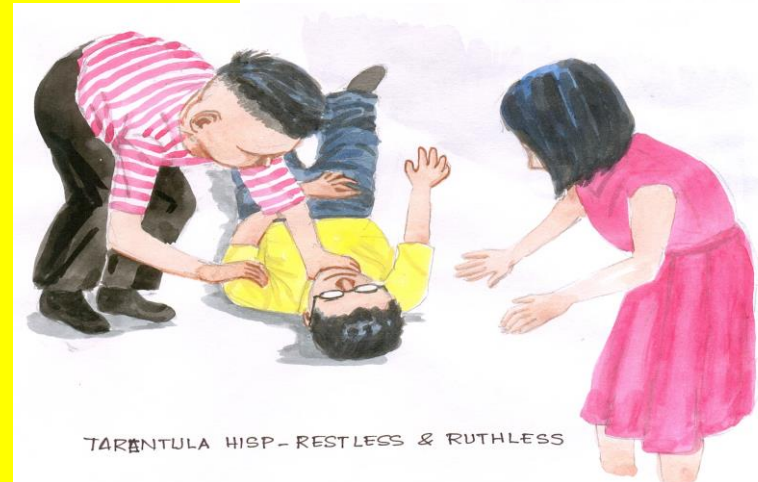
- Anger from
 - Contradiction
 - When touched→ Stubborn

- Refuses to eat
 - Disobedience
 - Mischievous

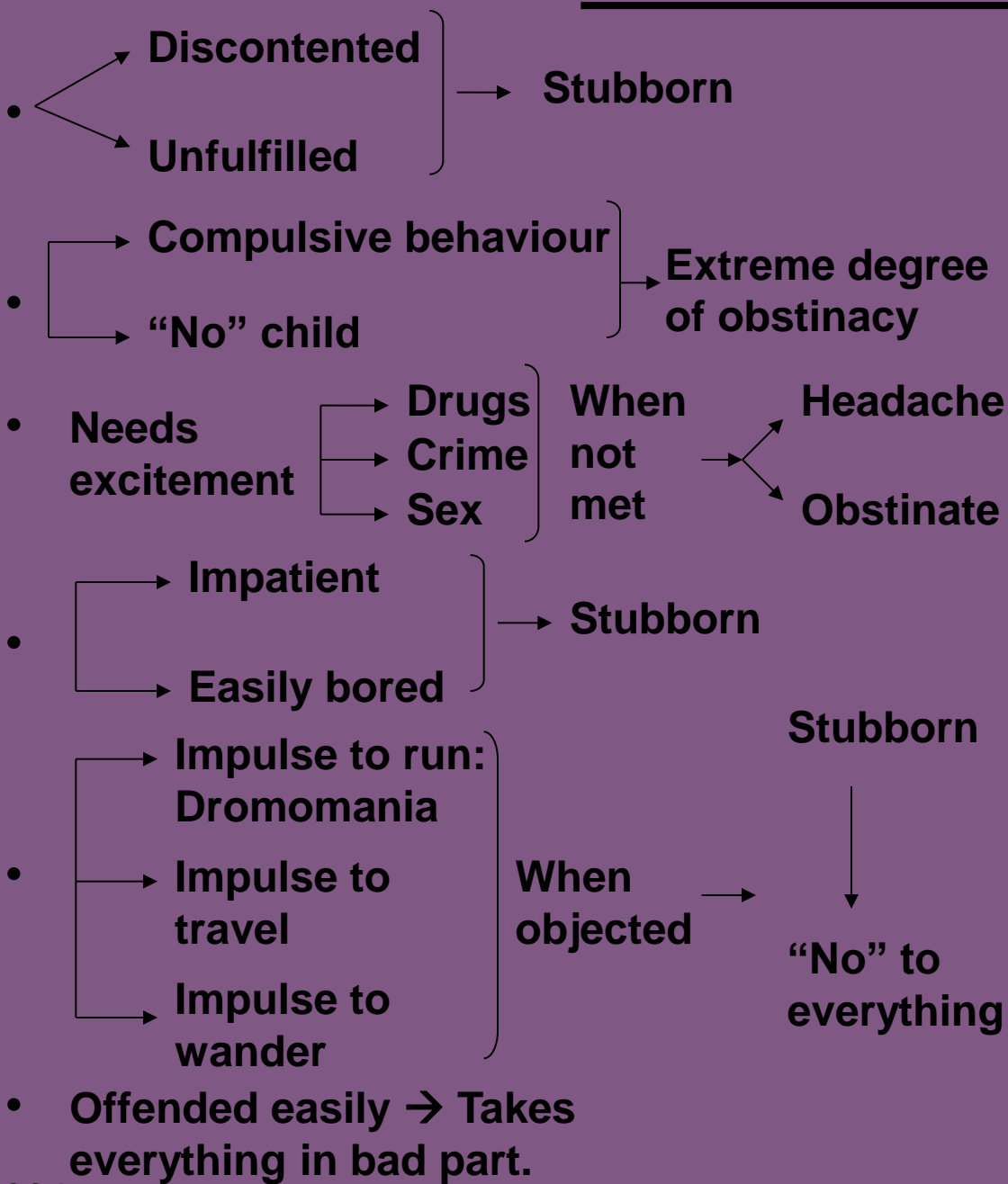
- Obstinate → Restlessness → Music ameliorates.

- Threatens to
 - Kill
 - Destroy→ Quarrelsome → Stubborn

- Destructive → Violence → Obstinate.



TUBERCULINUM



TUBERCULINUM - DISCONTENTED



TUBERCULINUM - NO CHILD

THANK YOU!