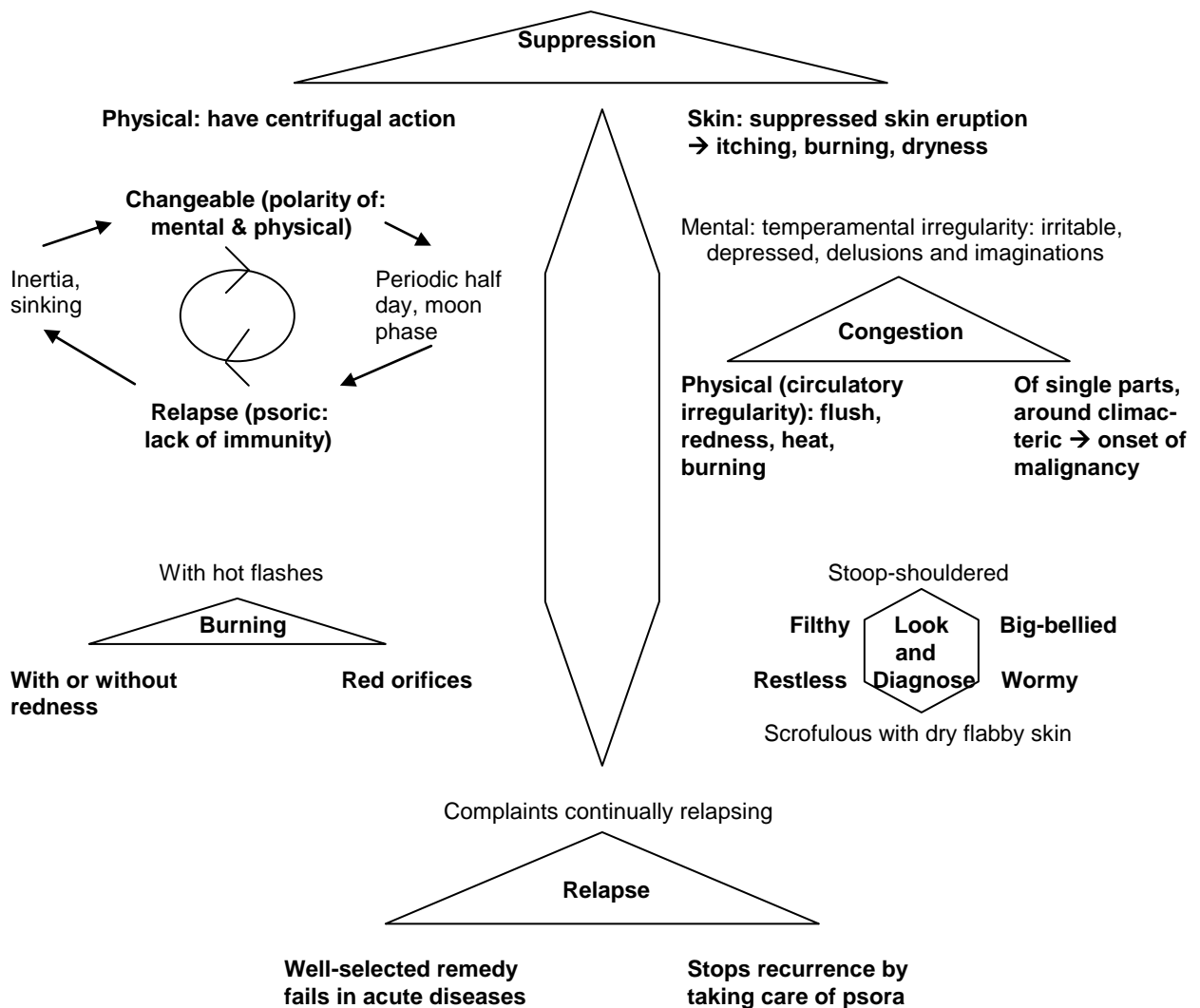




SULPHUR

A. PHYSICAL THEME

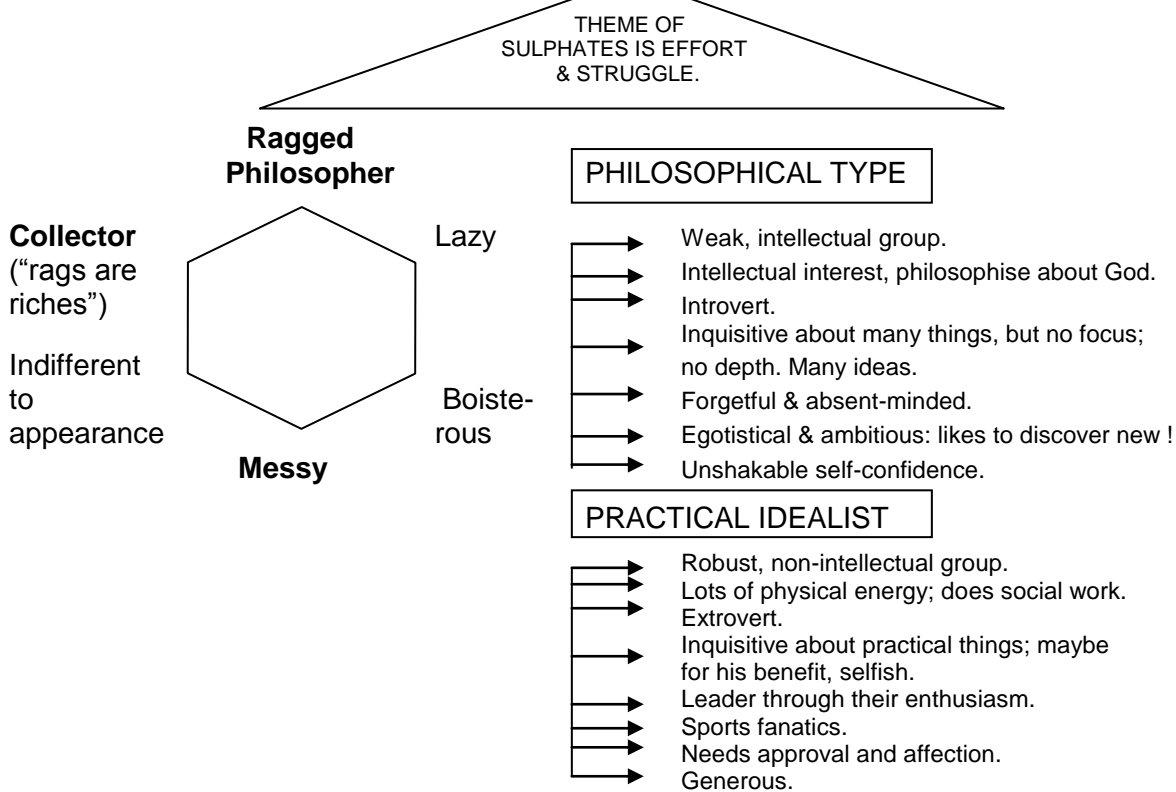
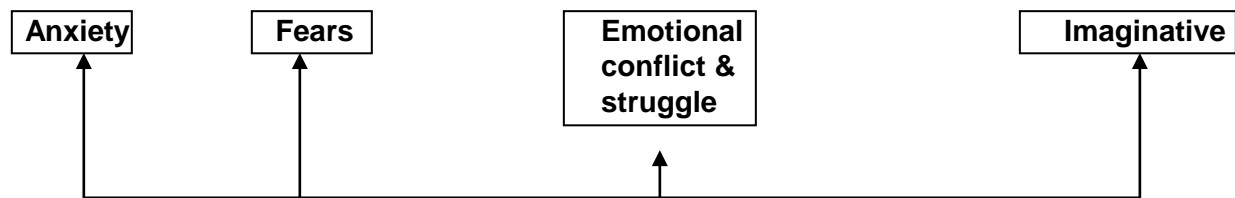
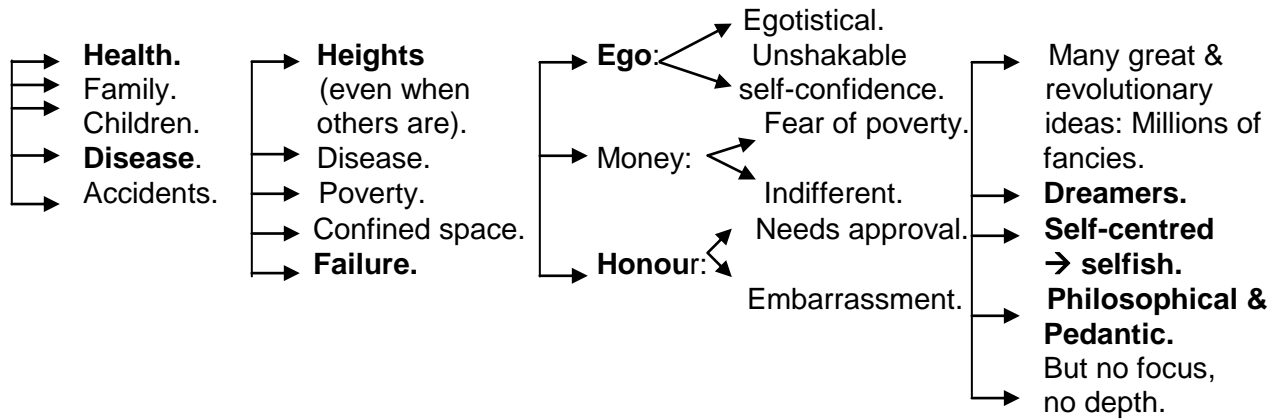
Mental: emotions suppressed: self-centred, selfish, introvert, egotistical

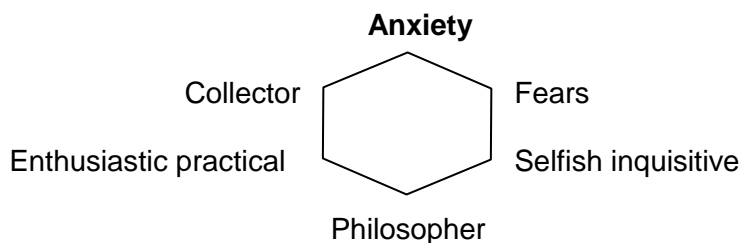


Physical Clinicals:

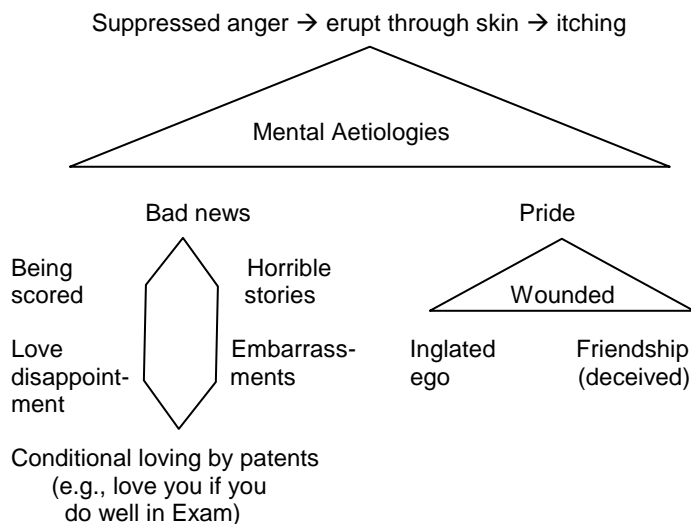
1. Skin conditions including Eczema; Psoriasis;Ulcers etc. and acute infected eczemas;
2. Menopausal Syndromes;
3. Chronic Congestive Disorders including headache and menstrual disorders;
4. Chest infections;
5. Urinary Tract Infections (U.T.I);
6. Acute and Chronic burning Gastritis and Gastro-enteritis;
7. Haemorrhoids and Fistulas with acute as well as chronic burning.

B. MENTAL ESSENCE

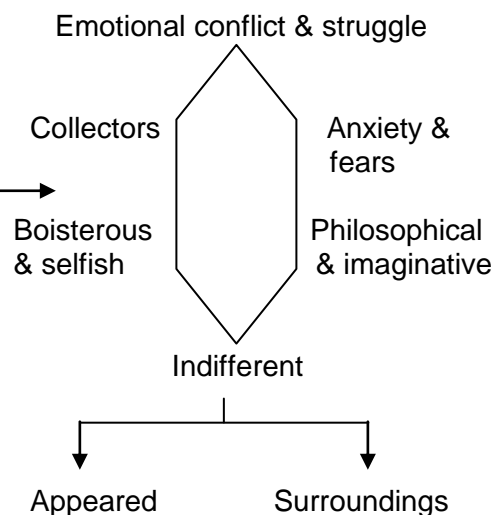




MENTAL AETIOLOGIES



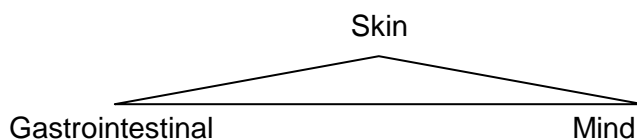
PSYCHIC MANIFESTATIONS



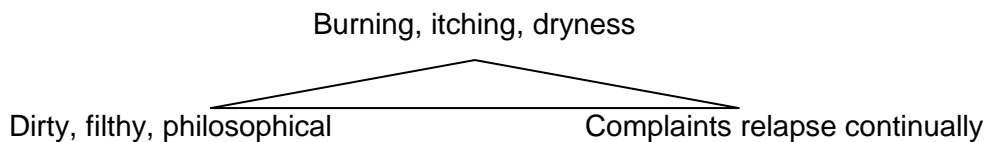
Mental Clinicals:

1. Anxiety Neurosis;
2. Fear Psychosis;
3. Senile Dementias including Memory Disorders;
4. Indolence & Depression.

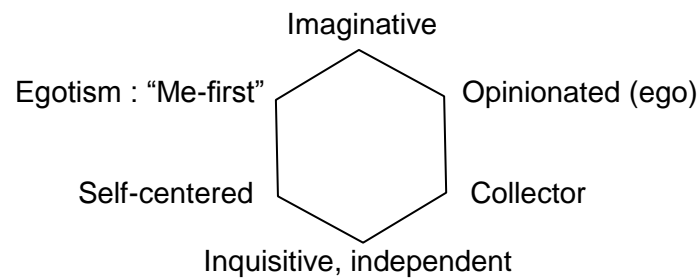
C. SPHERE OF ACTION: WEAKEST LINKS



D. CATCH WORDS: KEYNOTES



E. KEYWORDS FOR PERSONALITY PROFILE



F. POTENCY OF CHOICE

- i) Gastrointestinal : 30 C, 200 C.
- ii) Diarrhoea : 30 C (Specific)
- iii) Piles : 200 C.
- iv) Respiratory : 30 C.
- v) Menses : 30 C, 200 C
- vi) Skin : 30 C, LMs
- vii) Mentals : 1 M
- viii) Relapsing cases: 30C → 200C.

Acute as well as Chronic medicine.

G. MIASMATICS OF SULPHUR

Psora +++, Sycosis ++, Syphilis +++, Tubercular +++

H. CLINICAL TIPS

Acute (infected eczema, hot flush, acute burning gastritis, burning rectum etc.) as well as chronic medicine.