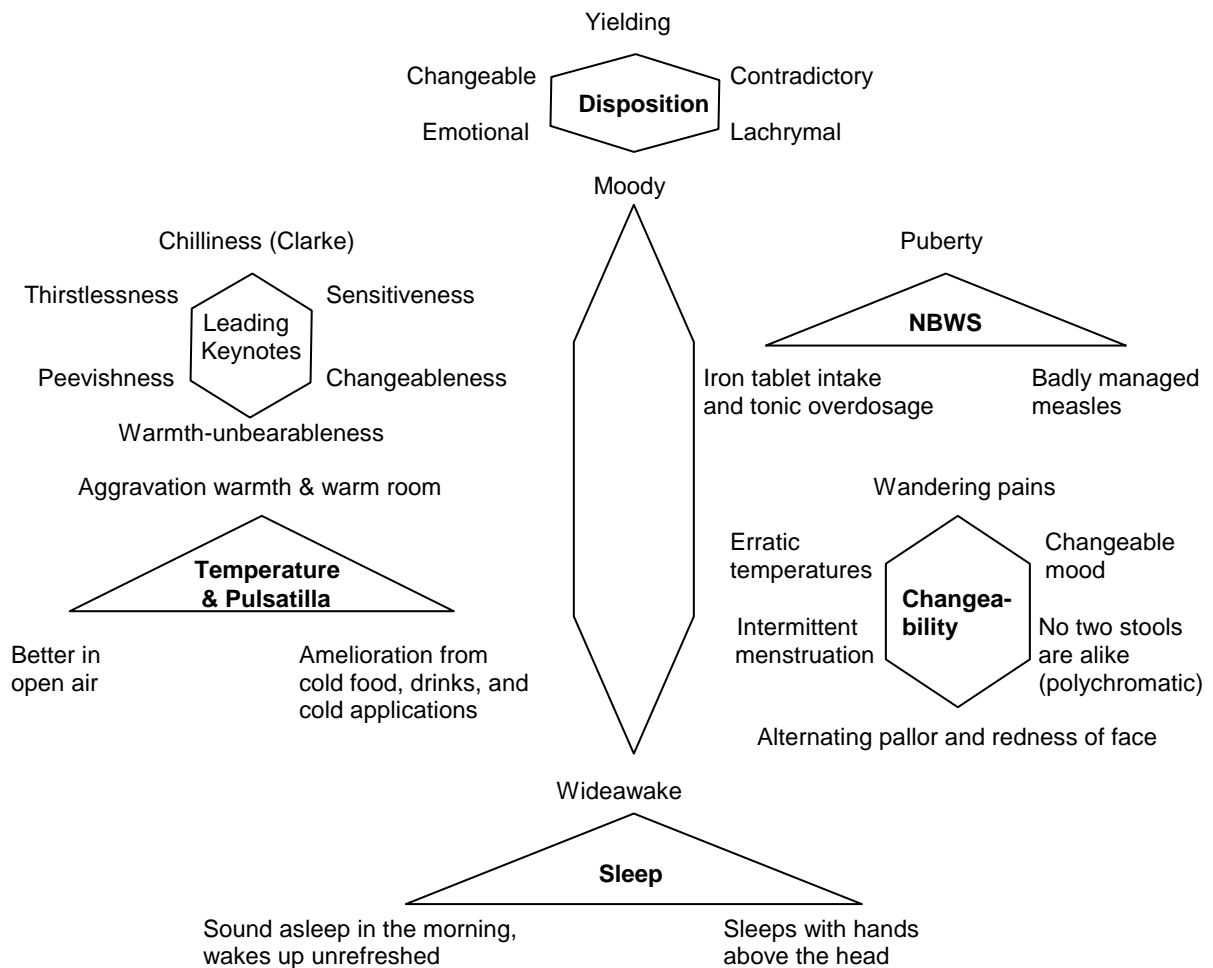




ALLEN COLLEGE OF HOMOEOPATHY,
 "Sapiens"
 382 Baddow Road,
 Great Baddow, Chelmsford CM2 9RA.
 England.
T: 44 (0) 1245 505859

PULSATILLA

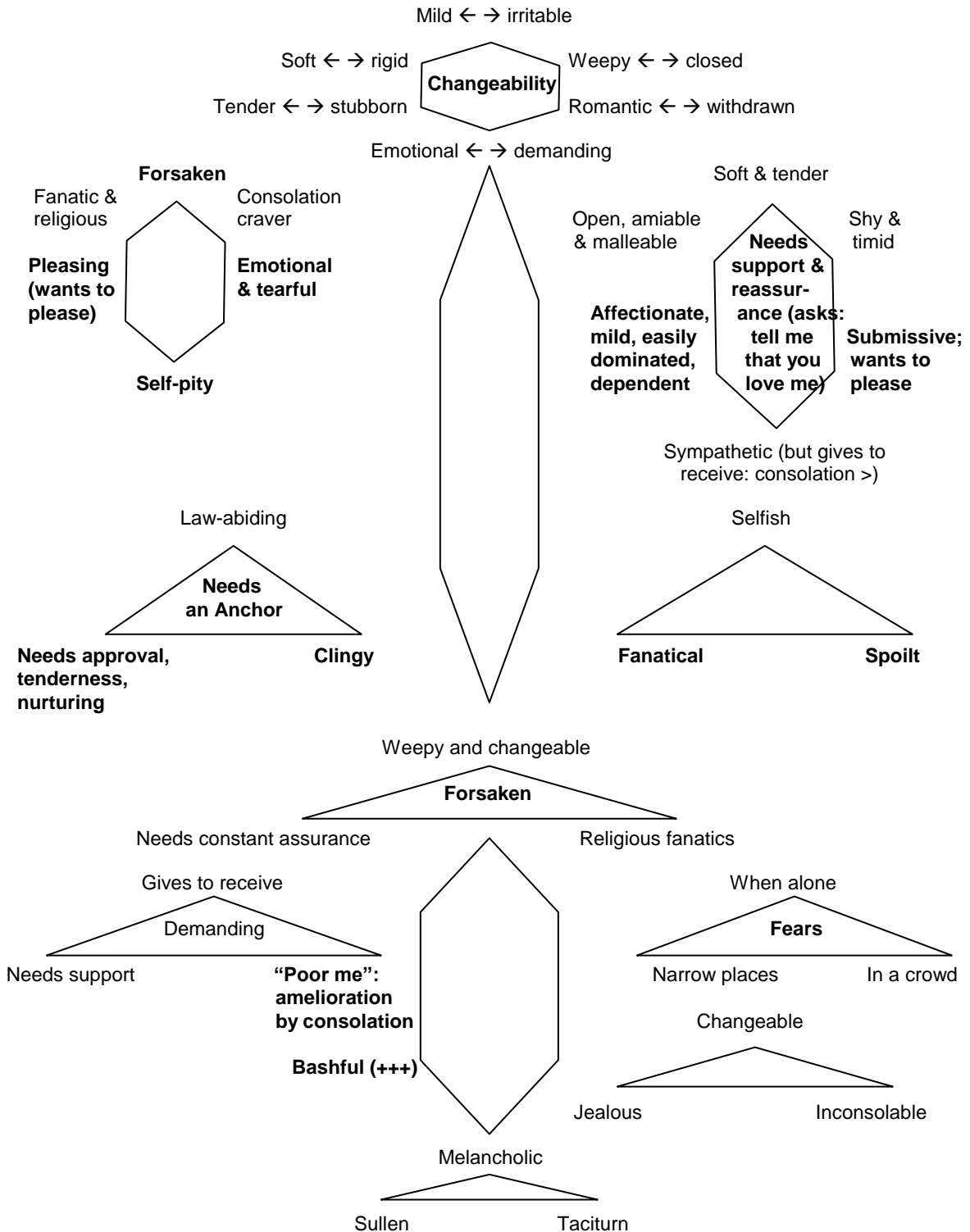
A. PHYSICAL THEME



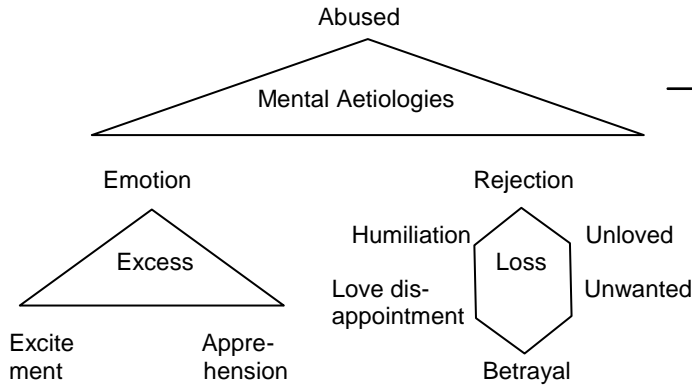
Physical Clinicals:

1. Acute & Chronic Gastritis;
2. Acute & Chronic Gastro-enteritis (diarrhoeas);
3. Acute & Chronic headaches;
4. Catarrhal symptoms including Sinusitis; Otorrhoea;
5. Menstrual disorders;
6. Menopausal symptoms;
7. Sleeping disorders;
8. Anaemia.

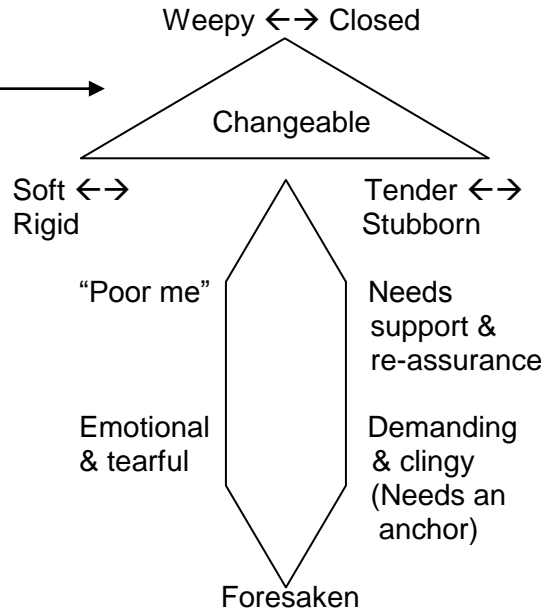
B. MENTAL ESSENCE



MENTAL AETIOLOGIES



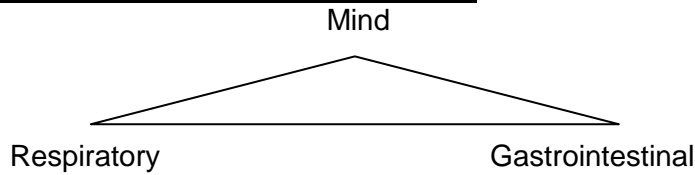
PSYCHIC MANIFESTATIONS



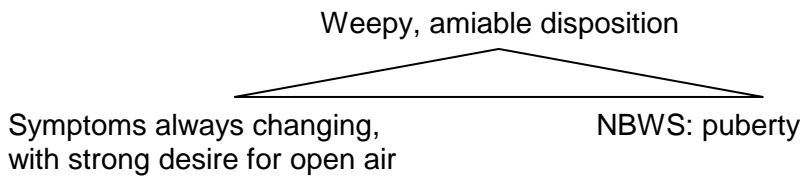
Mental Clinicals:

1. Anxiety Neurosis;
2. Fear Psychosis;
3. PMT (Pre-menstrual Tensions and Mood swings);
4. Depression;
5. Emotional changeability.

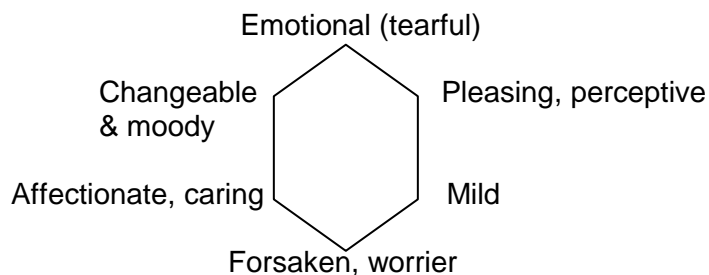
C. SPHERE OF ACTION: WEAKEST LINKS



D. CATCH WORDS: KEYNOTES



E. KEYWORDS FOR PERSONALITY PROFILE



F. POTENCY OF CHOICE

- i) Mental : 1M, 10M.
- ii) Conjunctivitis : 50M.
- iii) Otorrhoea : 10M.
- iv) Respiratory : 1M, 10M.
- v) Gastric : 200C.
- vi) Diarrhoea : 30C.
- vii) Female sexual : 1M.
- viii) Styes : 10M, 50M.
- ix) N.B.W.S. : 10M, 50M.
- x) Suppressed gonorrhoea, STD : 50M.

Acute as well as Chronic medicine.

G. MIASMATICS OF PULSATILLA

Psora ++, Sycosis +++, Syphilis +, Tubercular ++.

H. CLINICAL TIPS

In a party, after eating plenty of oily food → diarrhoea: it is Pulsatilla 30C [in such type of situations, diarrhoea from eating late: Nux Vomica and diarrhoea from overeating: Antim Crud]. Very demanding women, who always likes to have assurance.