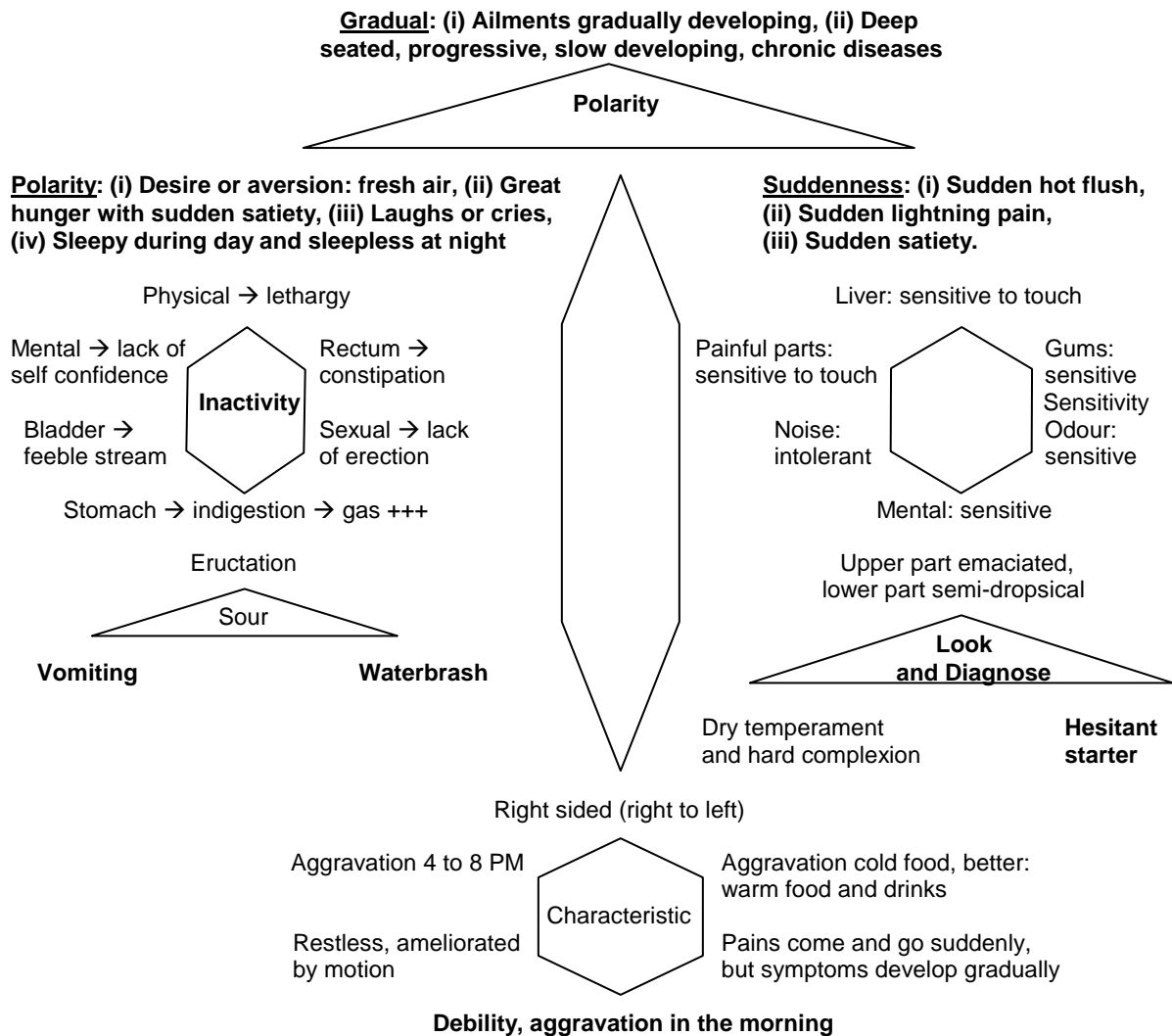




## LYCOPODIUM

### A. PHYSICAL THEME



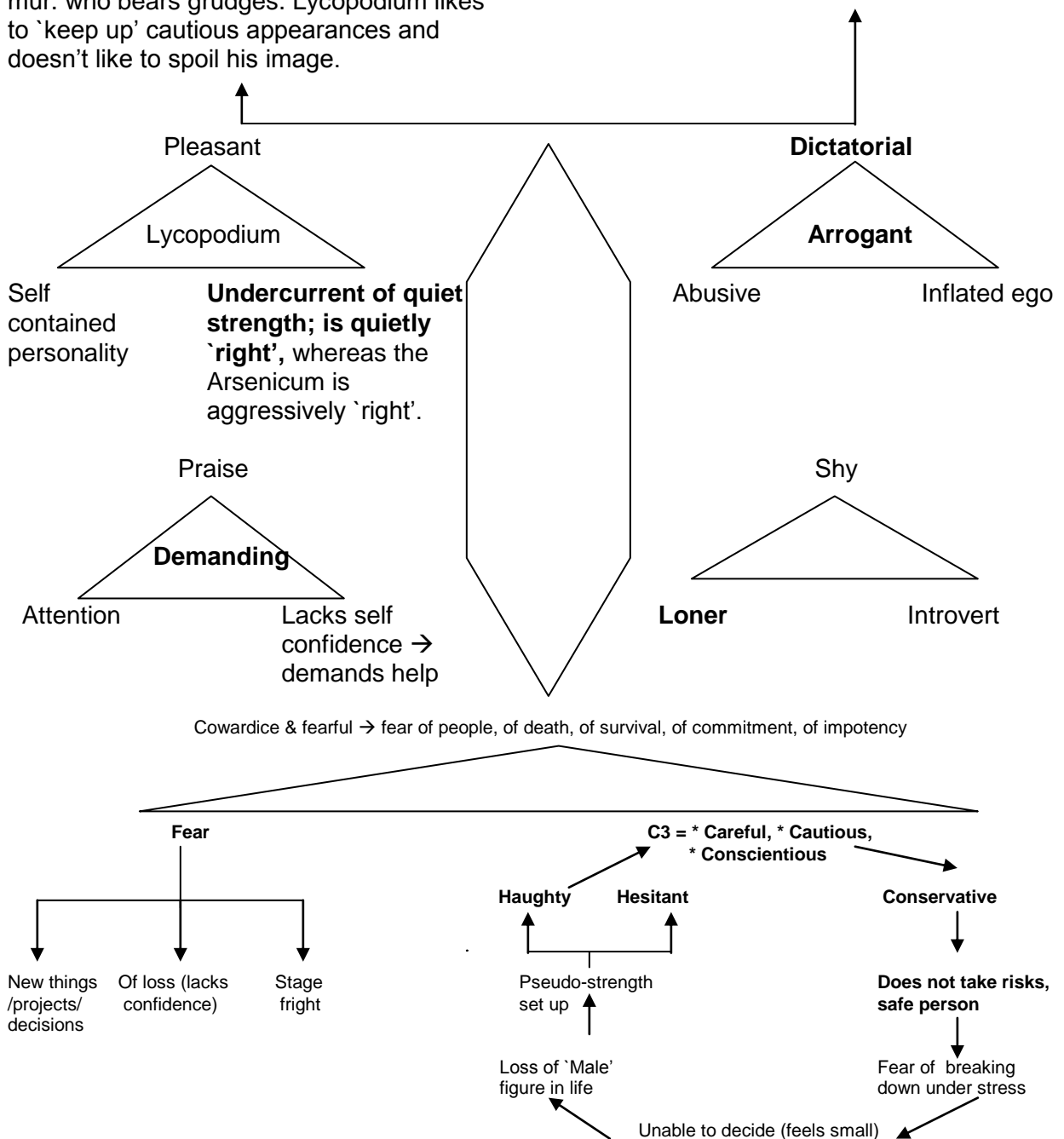
**Physical Clinicals:**

1. Slow progressive Chronic Diseases especially of Liver; Biliary Tract or Intestine;
2. Chronic Fatigue Syndrome;
3. Acute and Chronic Gastritis; Acidity; Abdominal & Gall Bladder colic etc;
4. Constipation;
5. Seminal Debility with Pre-mature ejaculation;
6. Oedema.

**B. MENTAL ESSENCE**

**Courteous** → self disciplined and succeeds easily → his ventures work. It is beneath his dignity to create bad relationships → can overlook past disagreements, unlike Natrum mur. who bears grudges. Lycopodium likes to 'keep up' cautious appearances and doesn't like to spoil his image.

**Haughty** → looks down on you → intolerant of contradiction → dictatorial → he enjoys his position & power (love of power) →

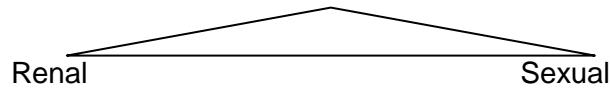


**Mental Clinicals:**

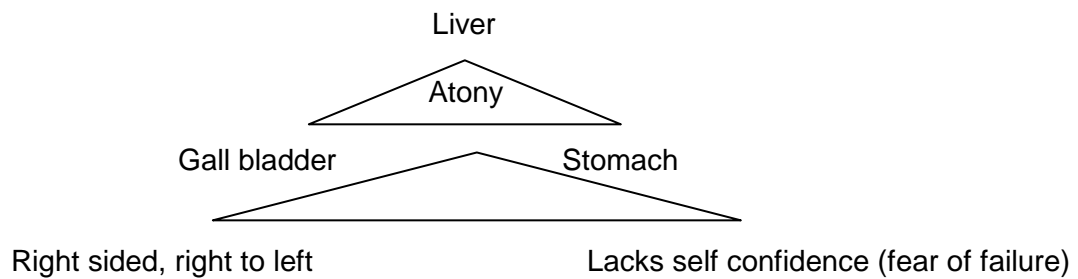
1. Fear Psychosis;
2. Hesitant Starter (initial hesitation);
3. Dictatorial; Abusive; Demanding.
4. Lack of self-confidence.

**C. SPHERE OF ACTION: WEAKEST LINKS**

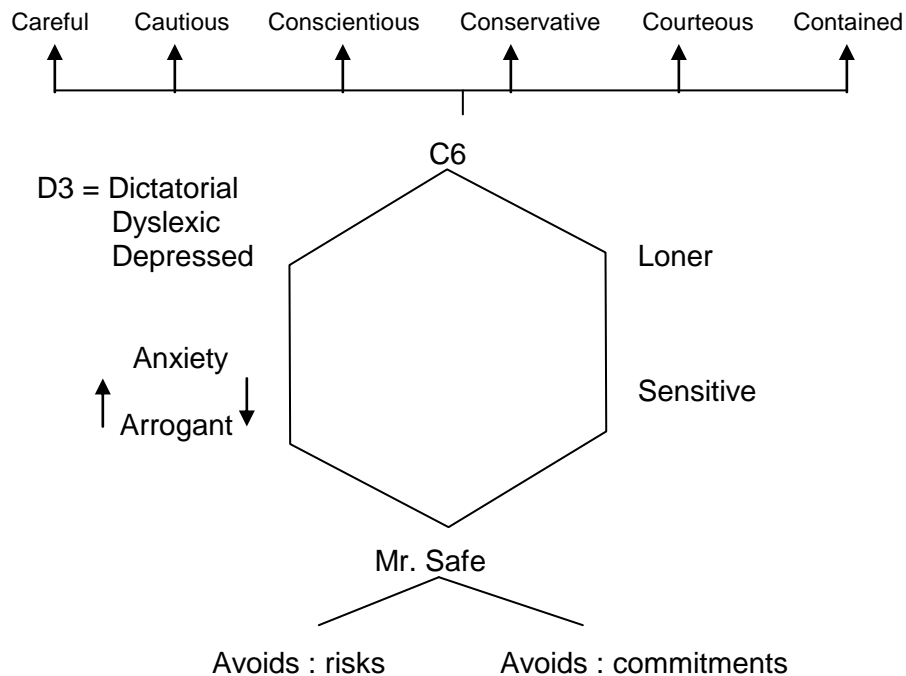
Digestive (including liver, gall bladder)



**D. CATCH WORDS: KEYNOTES**



**E. KEYWORDS FOR PERSONALITY PROFILE**



**F. POTENCY OF CHOICE**

- |                          |                           |
|--------------------------|---------------------------|
| i) Throat : 30 C, 200 C. | v) Respiratory : 30 C.    |
| ii) Colic : 6 C.         | vi) Urinary : 200 C, 1 M. |
| iii) Flatulence : 200 C. | vii) Sexual : 1 M.        |
| iv) Mental : 1 M.        |                           |

**Acute as well as Chronic medicine.**

**G. MIASMATICS OF LYCOPODIUM**

Psora +++, Sycosis +++, Syphilis ++, Tubercular +++)

**H. CLINICAL TIPS**

Deep seated progressive chronic diseases especially of gastro-biliary origin where liver is also affected and manifested as inactivity of organs. Treated cases of biliary colic (try 6C) with wonderful results, provided totality corroborates.