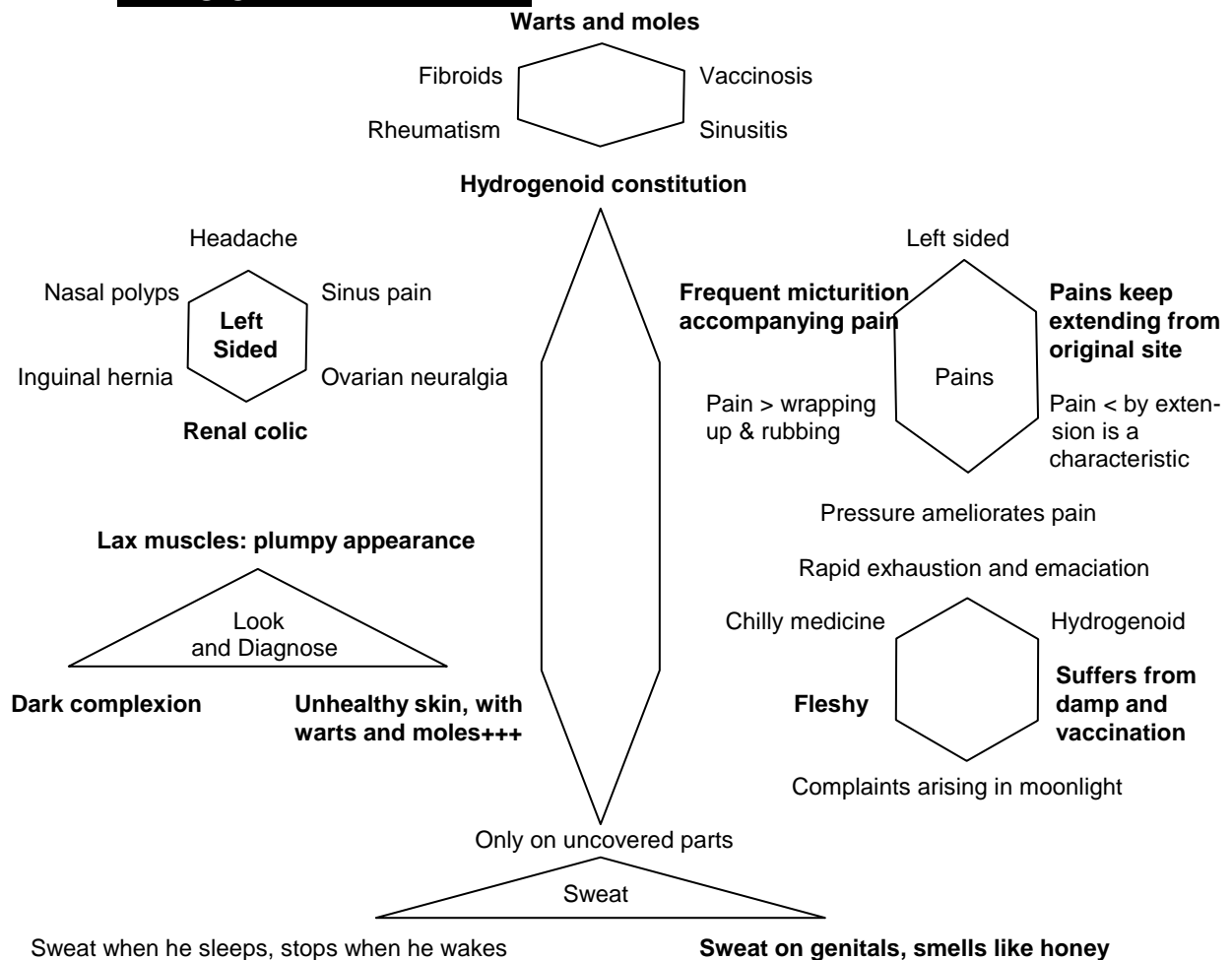




THUJA

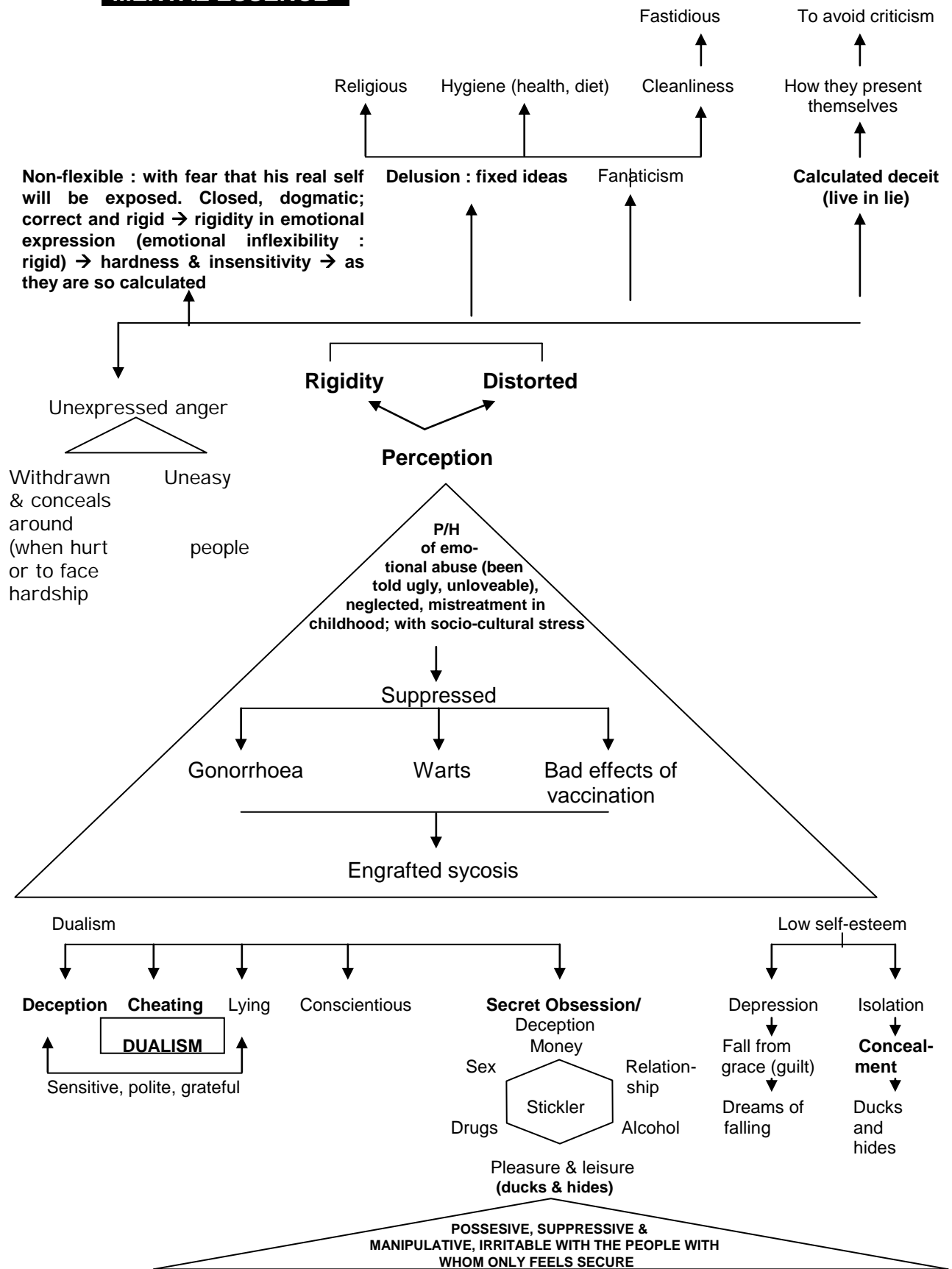
A. PHYSICAL THEME



Physical Clinicals:

1. Warts, condylomatas; skin tags; naevi;
2. Tumours including adenomas; fibromas and fibro-myomas;
3. Urinary Tract Infections (U.T.I);
4. Chronic headaches;
5. Nasal Polyps;
6. Acute & Chronic Gastro-enteritis;
7. Osteo-arthritis.

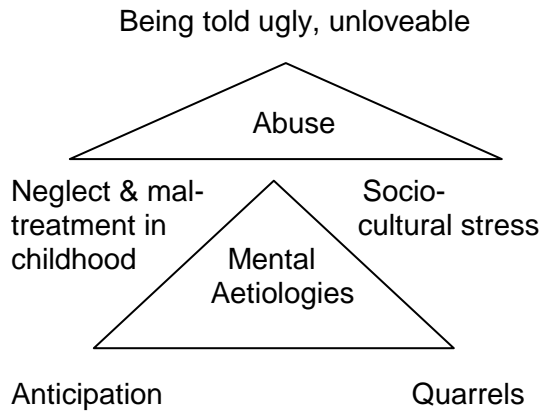
B. MENTAL ESSENCE



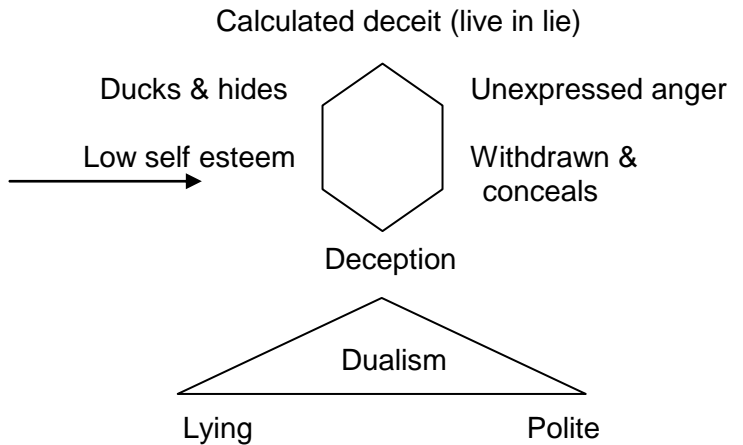
Guard; conceal. Natrum Muriaticum wall themselves off. Lycopodium and Silica will try to avoid things, but Thuja feels trapped and the best thing they can do is conceal themselves

Mistrust; distorted

MENTAL AETIOLOGIES



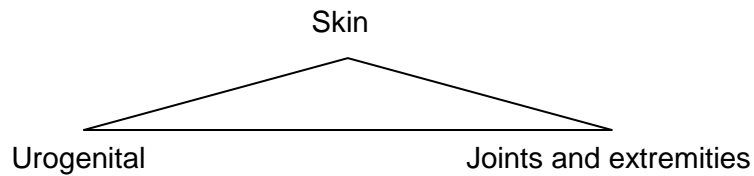
PSYCHIC MANIFESTATIONS



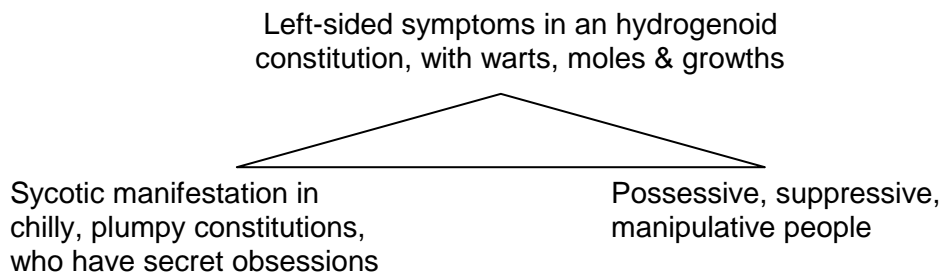
Mental Clinicals:

1. Anxiety Neurosis;
2. Fear Psychosis;
3. Delusion & Hallucination;
4. Obsessive Compulsive Disorders (O.C.D);
5. Manipulative behaviours.

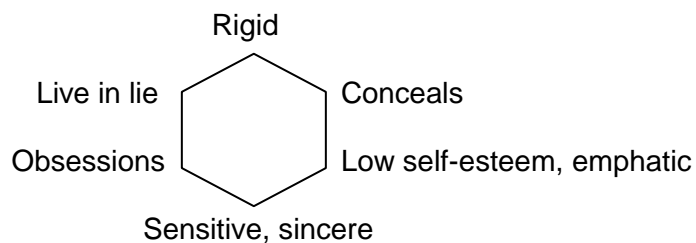
C. SPHERE OF ACTION: WEAKEST LINKS



D. CATCH WORDS: KEYNOTES



E. KEYWORDS FOR PERSONALITY PROFILE



F. POTENCY OF CHOICE

- i) Headache: 200 C.
- ii) Eyes : 30 C, 200 C.
- iii) Nose : 200 C, 1 M.
- iv) Abdomen : 200 C.
- v) Urinary : 200 C.
- vi) Rheumatism : 30 C.
- vii) Skin : 30 C.
- viii) Emotional : 1 M, 10 M.
- ix) Mental : 1M.

Acute as well as Chronic medicine.

G. MIASMATICS OF THUJA

Psora ++, Sycotic +++, Syphilis ++, Tubercular ++.

H. CLINICAL TIPS

Lax, plumpy, ganeshji appearance where the trunk represents extra growths, who suffers from osteo-arthritis which aggravates from damp; in deceitful people who have secret obsessions.